



THE YEARBOOK

of American & Canadian Churches

ASSOCIATION OF STATISTICIANS OF AMERICAN RELIGIOUS BODIES

THE YEARBOOK OF AMERICAN & CANADIAN CHURCHES

Copyright © 2021 Association of Statisticians of American Religious Bodies All rights reserved.

No part of this book may be reproduced in any manner whatsoever without written permission of the publisher except in brief quotations embodied in critical articles or reviews. For more information, contact the Association of of Statisticians of American Religious Bodies

ABOUT THE YEARBOOK

The Yearbook of American & Canadian Churches has served as the definitive handbook of North American denominations since 1916. Over our 100 year history, The Yearbook has remained an authoritative source for the most accurate and complete compilation of statistical data for North American religious bodies. Now an interactive online application, The Yearbook continues to catalog census information for *** denominational religious bodies. As of 2020, the Yearbook represents ***,*** faithful members, ***,*** clergy, ***,*** congregations, **,*** educational bodies, and more than \$***,***,***,***.** in total financial commitment.

Each listing contains a brief paragraph about the religious body, contact information for the group, and informative graphs detailing current and historical statistical data. Previously stewarded by the National Council of Churches, The Yearbook is overseen by the Association of Statisticians of American Religious Bodies (ASARB). in partnership with The National Council of Churches and Lake Institute on Faith and Giving. We invite you to join our effort by adding data for your religious group, becoming an ASARB member or making a contribution to our cause.

Visit us online at www.asarb.org.

OUR PARTNERS



CHURCH OF THE BRETHREN



Headquarters

1451 Dundee Ave.
Elgin, IL 60120
United States
[\(800\)323-8039](tel:(800)323-8039)
cobweb@brethren.org
<https://www.brethren.org>
[Christian Protestant TO BE
ALLOCATED](#)

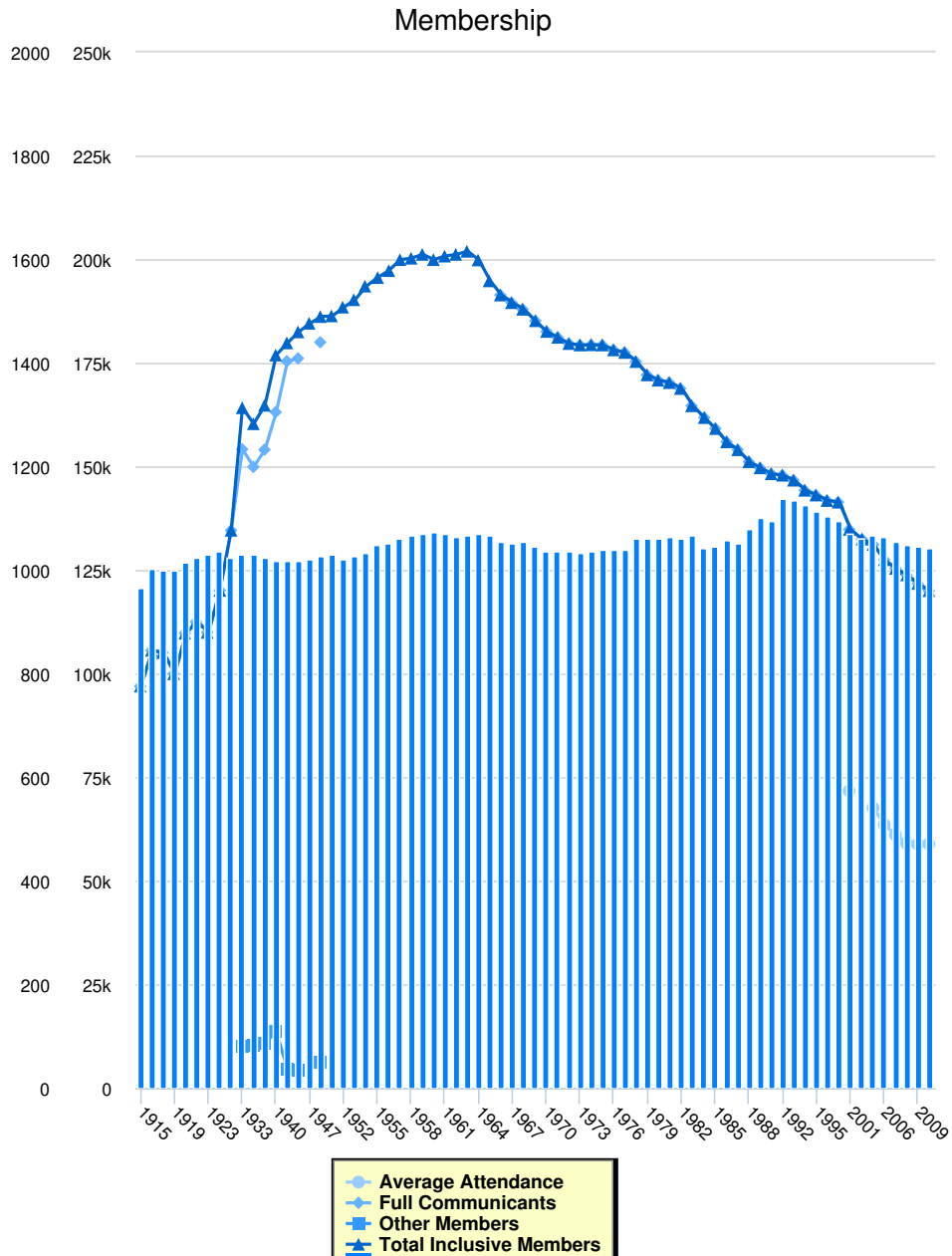
Attesting Officer

MR. JOSEPH
CUNNINGHAM
Secretary, the General
Council of C.U. of the U.S.A
[\(937\)981-2760](tel:(937)981-2760)
ohiocu@gmail.com

Media Contact

CHERYL BRUMBAUGH-
CAYFORD, DIRECTOR OF
NEWS SERVICES

Eight German Pietists/Anabaptists, including their leader, Alexander Mack, founded the Brethren movement in 1708 in Schwarzenau, Germany. Begun in reaction to spiritual stagnation in state churches, the Brethren formed their own movement, modeled on the first-century church. They practice believer baptism, anointing, and the love feast. They have no other creed than the New Testament, hold to principles of nonviolence, no force in religion, Christian service, and simplicity. They migrated to the colonies beginning in 1710 and settled at Germantown, Pennsylvania, moving westward and southward to plant congregations across the United States and Puerto Rico. Emphasis on religion in daily life led to the formation of Brethren Volunteer Service in 1948, which continues today. There are now sister denominations and missions in Nigeria, Haiti, India, Brazil, the Dominican Republic, and mission workers in several other places around the world.



Instructions for the Chart and Legend

Simply click on the data set in the legend to make the values appear or disappear from the chart.

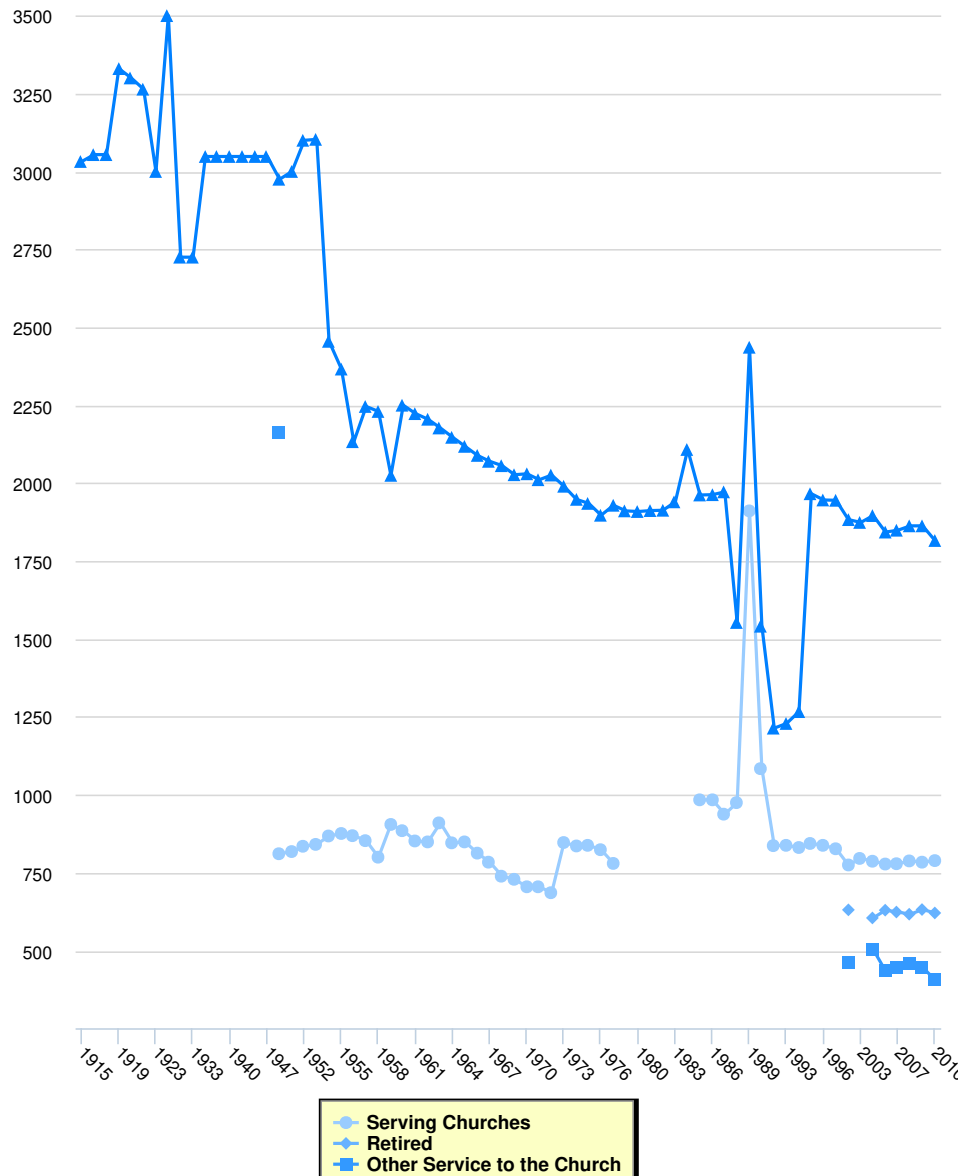
Membership

	Full Communicants	Average Attendance	Other Members	Total Inclusive Members	Total Churches	Membership Calculation Method
2010	120,041	58,946	0	120,041	1,043	
2009	121,781	58,830	0	121,781	1,047	
2008	123,855	59,084	0	123,855	1,049	
2007	125,418	61,125	0	125,418	1,055	
2006	127,526	63,571	0	127,526	1,064	
2004	131,201	67,591	0	131,201	1,068	
2003	132,481	0	0	132,481	1,062	
2001	134,828	71,737	0	134,828	1,070	
1997	141,400	0	0	141,400	1,095	
1996	141,811	0	0	141,811	1,106	

	Full Communicants	Average Attendance	Other Members	Total Inclusive Members	Total Churches	Membership Calculation Method
1995	143,121	0	0	143,121	1,114	
1994	144,282	0	0	144,282	1,127	
1993	146,713	0	0	146,713	1,135	
1992	147,912	0	0	147,912	1,139	
1990	148,253	0	0	148,253	1,095	
1989	149,681	0	0	149,681	1,102	
1988	151,169	0	0	151,169	1,079	
1987	154,067	0	0	154,067	1,052	
1986	155,967	0	0	155,967	1,059	
1985	159,184	0	0	159,184	1,045	
1984	161,824	0	0	161,824	1,044	
1983	164,680	0	0	164,680	1,067	
1982	168,844	0	0	168,844	1,063	
1981	170,267	0	0	170,267	1,064	
1980	170,839	0	0	170,839	1,063	
1979	172,115	0	0	172,115	1,061	
1978	175,335	0	0	175,335	1,061	
1977	177,534	0	0	177,534	1,041	
1976	178,157	0	0	178,157	1,041	
1975	179,336	0	0	179,336	1,041	
1974	179,387	0	0	179,387	1,038	
1973	179,333	0	0	179,333	1,035	
1972	179,686	0	0	179,686	1,037	
1971	181,183	0	0	181,183	1,036	
1970	182,614	0	0	182,614	1,038	
1969	185,198	0	0	185,198	1,045	
1968	187,957	0	0	187,957	1,054	
1967	189,558	0	0	189,558	1,052	
1966	191,402	0	0	191,402	1,056	
1965	0	0	0	194,815	1,067	
1964	0	0	0	199,854	1,070	
1963	0	0	0	201,958	1,069	
1962	0	0	0	201,220	1,064	
1961	0	0	0	200,788	1,070	
1960	0	0	0	199,947	1,074	
1959	0	0	0	201,219	1,070	
1958	0	0	0	200,282	1,069	
1957	0	0	0	199,936	1,062	
1956	0	0	0	197,290	1,052	
1955	0	0	0	195,609	1,049	
1954	0	0	0	193,547	1,035	
1953	0	0	0	190,263	1,028	
1952	0	0	0	188,467	1,021	
1951	0	0	0	186,358	1,030	
1950	180,000	0	6,201	186,201	1,029	
1947	0	0	0	184,584	1,021	
1944	176,100	0	4,187	182,497	1,019	
1942	175,416	0	4,427	179,843	1,019	
1940	163,133	0	13,775	176,908	1,017	
1938	154,073	0	10,711	164,784	1,025	

	Full Communicants	Average Attendance	Other Members	Total Inclusive Members	Total Churches	Membership Calculation Method
1936	149,913	0	10,422	160,335	1,032	
1933	154,169	0	10,021	164,190	1,031	
1929	134,620	0	0	134,620	1,026	
1925	120,103	0	0	120,103	1,036	
1923	110,000	0	0	110,000	1,030	
1922	112,563	0	0	112,563	1,024	
1921	109,790	0	0	109,790	1,014	
1919	100,000	0	0	100,000	1,000	
1917	105,102	0	0	105,102	999	
1916	105,649	0	0	105,649	1,004	
1915	97,000	0	0	97,000	965	

Clergy



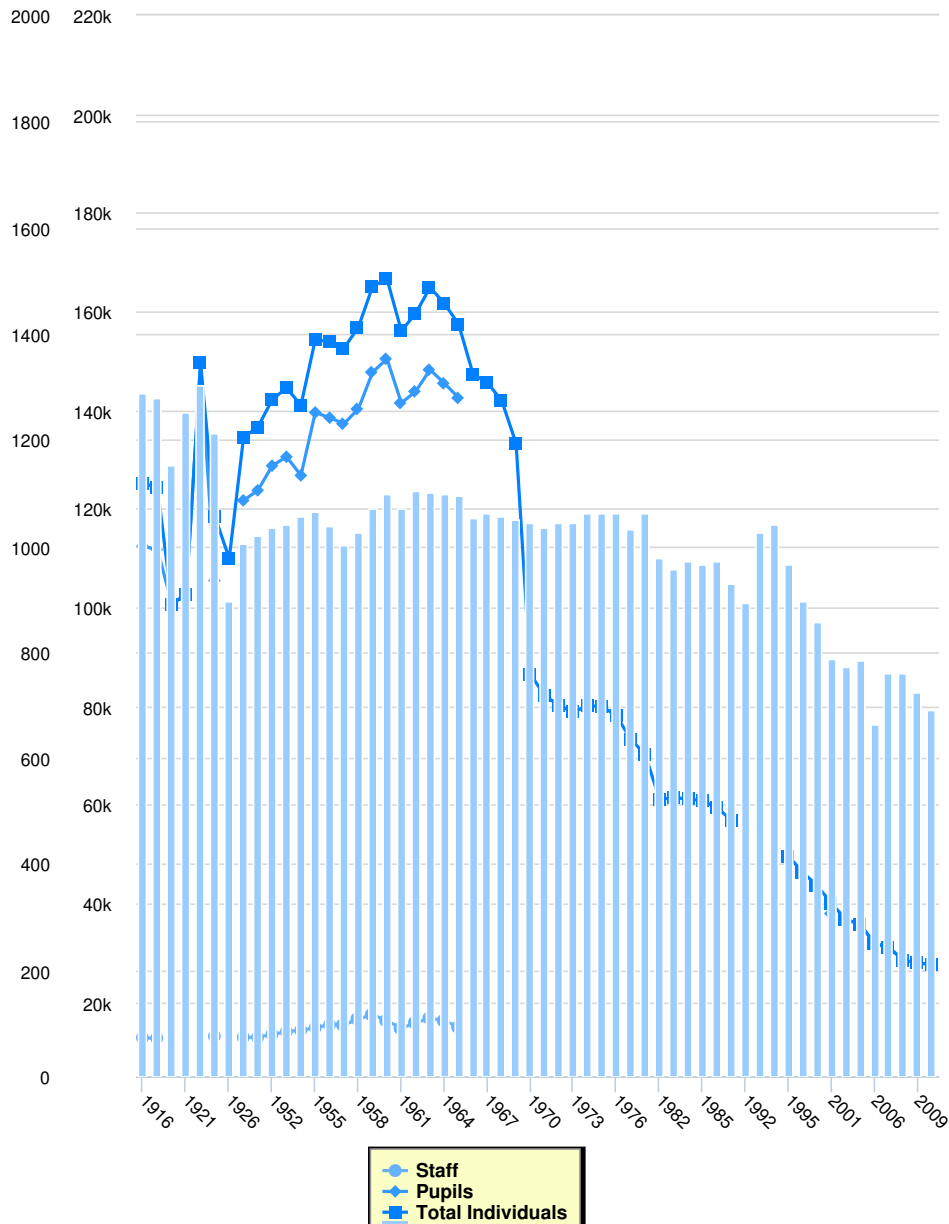
Clergy

	Serving Churches	Retired	Other Service to the Church	Total Clergy
2010	789	621	406	1,816
2009	784	632	447	1,863
2008	788	617	458	1,863
2007	779	624	446	1,849
2006	778	630	435	1,843
2004	787	605	504	1,896
2003	796	0	0	1,874
2001	775	631	463	1,883
1997	827	0	0	1,945
1996	838	0	0	1,946
1995	844	0	0	1,966
1994	831	0	0	1,267
1993	838	0	0	1,229
1992	837	0	0	1,214

	Serving Churches	Retired	Other Service to the Church	Total Clergy
1990	1,084	0	0	1,541
1989	1,911	0	0	2,436
1988	975	0	0	1,553
1987	938	0	0	1,972
1986	984	0	0	1,963
1985	984	0	0	1,962
1984	0	0	0	2,108
1983	0	0	0	1,940
1982	0	0	0	1,913
1981	0	0	0	1,912
1980	0	0	0	1,909
1979	0	0	0	1,911
1977	780	0	0	1,929
1976	824	0	0	1,897
1975	838	0	0	1,935
1974	836	0	0	1,948
1973	847	0	0	1,990
1972	686	0	0	2,026
1971	705	0	0	2,011
1970	705	0	0	2,030
1969	729	0	0	2,027
1968	739	0	0	2,056
1967	784	0	0	2,070
1966	813	0	0	2,089
1965	849	0	0	2,118
1964	846	0	0	2,147
1963	910	0	0	2,177
1962	849	0	0	2,205
1961	852	0	0	2,223
1960	885	0	0	2,250
1959	905	0	0	2,025
1958	800	0	0	2,230
1957	853	0	0	2,246
1956	869	0	0	2,133
1955	876	0	0	2,366
1954	868	0	0	2,455
1953	841	0	0	3,103
1952	835	0	0	3,100
1951	818	0	0	3,000
1950	811	0	2,164	2,975
1947	0	0	0	3,048
1944	0	0	0	3,048
1942	0	0	0	3,048
1940	0	0	0	3,048
1938	0	0	0	3,048
1936	0	0	0	3,048
1933	0	0	0	2,725
1929	0	0	0	2,725
1925	0	0	0	3,500
1923	0	0	0	3,000
1922	0	0	0	3,264

	Serving Churches	Retired	Other Service to the Church	Total Clergy
1921	0	0	0	3,300
1919	0	0	0	3,330
1917	0	0	0	3,054
1916	0	0	0	3,054
1915	0	0	0	3,032

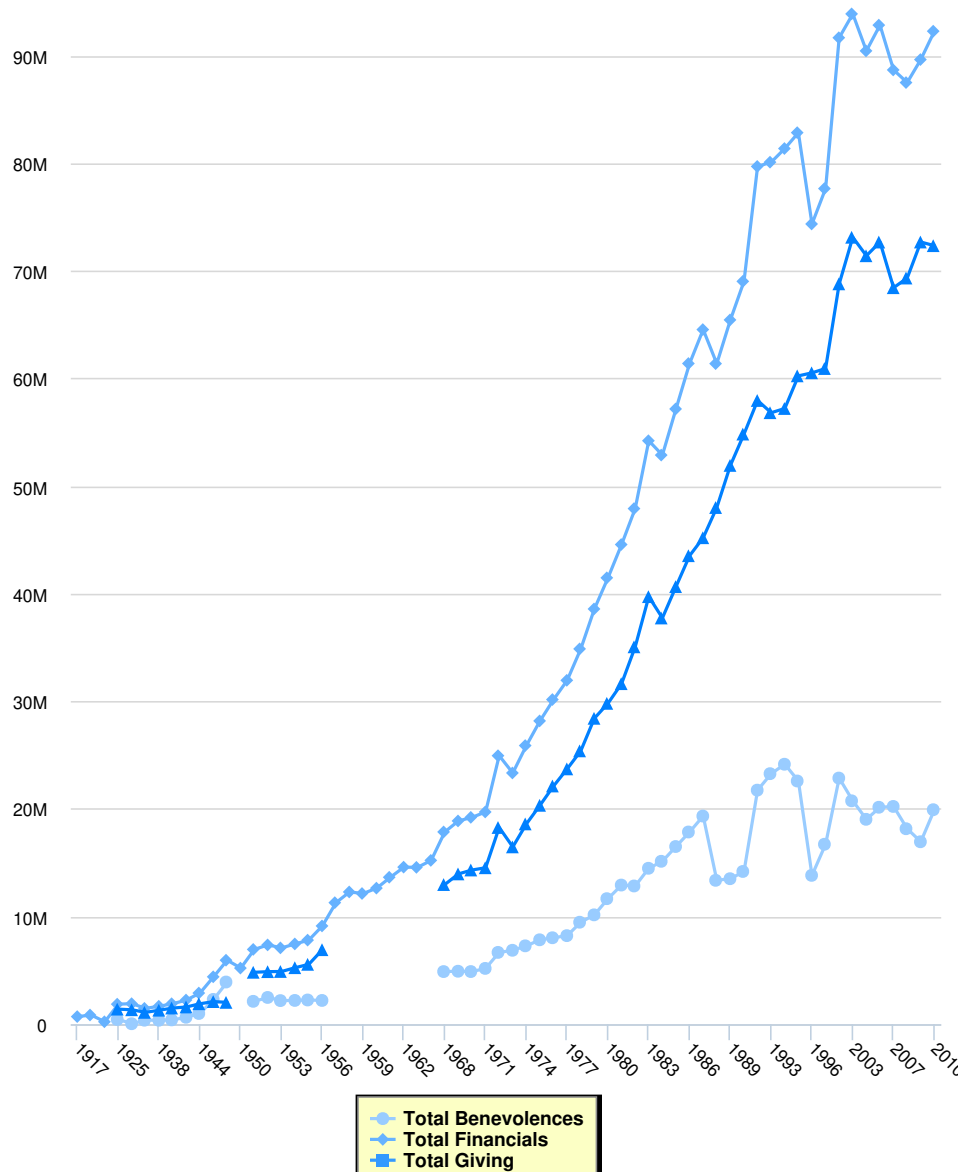
Education



	Education			
	Total Schools	Staff	Pupils	Total Individuals
2010	690	0	27,598	27,598
2009	724	0	27,902	27,902
2008	760	0	28,456	28,456
2007	760	0	31,006	31,006
2006	664	0	31,837	31,837
2004	785	0	35,671	35,671
2003	773	0	0	36,739
2001	788	0	37,916	39,897
1997	858	0	0	43,577
1996	897	0	0	46,183
1995	964	0	0	49,543
1994	1,040	0	0	0
1993	1,027	0	0	0

	Total Schools	Staff	Pupils	Total Individuals
1992	894	0	0	0
1987	929	0	0	56,848
1986	971	0	0	59,410
1985	964	0	0	60,754
1984	972	0	0	61,182
1983	957	0	0	61,376
1982	978	0	0	61,067
1978	1,061	0	0	70,156
1977	1,033	0	0	73,243
1976	1,061	0	0	77,967
1975	1,061	0	0	79,913
1974	1,061	0	0	80,027
1973	1,043	0	0	78,778
1972	1,045	0	0	80,077
1971	1,034	0	0	82,079
1970	1,044	0	0	86,407
1969	1,050	0	0	133,232
1968	1,056	0	0	141,876
1967	1,063	0	0	145,546
1966	1,054	0	0	147,257
1965	1,096	14,878	142,457	157,335
1964	1,099	16,197	145,415	161,612
1963	1,100	16,686	148,168	164,854
1962	1,104	15,799	143,774	159,573
1961	1,070	14,623	141,417	156,040
1960	1,097	16,205	150,382	166,587
1959	1,070	17,391	147,672	165,063
1958	1,025	16,544	140,213	156,757
1957	1,003	15,323	137,219	152,542
1956	1,039	15,373	138,446	153,819
1955	1,064	14,775	139,500	154,275
1954	1,056	14,240	126,733	140,973
1953	1,042	13,951	130,515	144,466
1952	1,034	13,421	128,708	142,129
1951	1,020	12,810	123,712	136,522
1950	1,004	12,814	121,679	134,493
1926	895	0	0	109,891
1925	1,213	13,033	105,413	118,446
1922	1,302	0	149,528	149,528
1921	1,251	0	102,627	102,627
1919	1,153	0	100,653	100,653
1917	1,279	12,629	111,686	124,315
1916	1,288	12,726	112,387	125,113

Finance



Finance

	Total Benevolences	Total Financials	Total Giving	Local Expenses	Method
2010	\$19,930,435	\$92,270,210		\$72,339,775	
2009	\$16,952,618	\$89,631,907		\$72,679,289	
2008	\$18,163,083	\$87,494,968		\$69,331,885	
2007	\$20,233,969	\$88,668,503		\$68,434,534	
2006	\$20,157,405	\$92,834,308		\$72,676,903	
2004	\$19,038,122	\$90,440,250		\$71,402,128	
2003	\$20,756,646	\$93,876,819		\$73,120,173	
2001	\$22,869,690	\$91,660,623		\$68,790,933	
1997	\$16,720,527	\$77,644,344		\$60,923,817	
1996	\$13,830,836	\$74,355,393		\$60,524,557	
1995	\$22,599,214	\$82,841,632		\$60,242,418	
1994	\$24,155,595	\$81,366,277		\$57,210,682	
1993	\$23,278,848	\$80,097,846		\$56,818,998	

	Total Benevolences	Total Financials	Total Giving	Local Expenses	Method
1992	\$21,748,320	\$79,703,215		\$57,954,895	
1990	\$14,192,237	\$69,024,463		\$54,832,226	
1989	\$13,519,772	\$65,441,592		\$51,921,820	
1988	\$13,370,216	\$61,378,873		\$48,008,657	
1987	\$19,342,402	\$64,544,134		\$45,201,732	
1986	\$17,859,101	\$61,390,394		\$43,531,293	
1985	\$16,509,718	\$57,168,622		\$40,658,904	
1984	\$15,136,600	\$52,880,127		\$37,743,527	
1983	\$14,488,192	\$54,214,935		\$39,726,743	
1982	\$12,844,415	\$47,908,983		\$35,064,568	
1981	\$12,929,076	\$44,570,095		\$31,641,019	
1980	\$11,663,976	\$41,477,241		\$29,813,265	
1979	\$10,161,266	\$38,583,950		\$28,422,684	
1978	\$9,476,220	\$34,873,751		\$25,397,531	
1977	\$8,228,903	\$31,951,720		\$23,722,817	
1976	\$8,032,293	\$30,166,151		\$22,133,858	
1975	\$7,842,819	\$28,181,170		\$20,338,351	
1974	\$7,281,551	\$25,891,165		\$18,609,614	
1973	\$6,868,927	\$23,343,685		\$16,474,758	
1972	\$6,671,596	\$24,949,495		\$18,277,899	
1971	\$5,184,768	\$19,720,042		\$14,535,274	
1970	\$4,891,618	\$19,219,514		\$14,327,896	
1969	\$4,921,991	\$18,886,149		\$13,964,158	
1968	\$4,889,727	\$17,865,556		\$12,975,829	
1964	\$0	\$15,221,162		\$0	
1963	\$0	\$14,574,688		\$0	
1962	\$0	\$14,594,572		\$0	
1961	\$0	\$13,653,155		\$0	
1960	\$0	\$12,644,194		\$0	
1959	\$0	\$12,143,983		\$0	
1958	\$0	\$12,288,049		\$0	
1957	\$0	\$11,293,388		\$0	
1956	\$2,207,559	\$9,130,616		\$6,923,057	
1955	\$2,249,999	\$7,812,806		\$5,562,807	
1954	\$2,208,679	\$7,458,584		\$5,249,905	
1953	\$2,193,155	\$7,091,624		\$4,898,469	
1952	\$2,485,442	\$7,367,138		\$4,881,696	
1951	\$2,125,157	\$6,948,967		\$4,823,810	
1950	\$0	\$5,213,969		\$0	
1948	\$3,919,427	\$5,947,067		\$2,027,640	
1946	\$2,303,980	\$4,403,980		\$2,100,000	
1944	\$995,983	\$2,895,983		\$1,900,000	
1942	\$645,013	\$2,245,013		\$1,600,000	
1940	\$401,605	\$1,901,605		\$1,500,000	
1938	\$368,269	\$1,668,269		\$1,300,000	
1936	\$372,931	\$1,472,931		\$1,100,000	
1929	\$44,250	\$1,907,040		\$1,339,000	
1925	\$441,348	\$1,862,975		\$1,398,650	
1923	\$0	\$225,379		\$0	
1921	\$0	\$852,938		\$0	
1917	\$0	\$705,725		\$0	

