



# **THE YEARBOOK**

of American & Canadian Churches

ASSOCIATION OF STATISTICIANS OF AMERICAN RELIGIOUS BODIES

# THE YEARBOOK OF AMERICAN & CANADIAN CHURCHES

Copyright © 2021 Association of Statisticians of American Religious Bodies All rights reserved.

No part of this book may be reproduced in any manner whatsoever without written permission of the publisher except in brief quotations embodied in critical articles or reviews. For more information, contact the Association of of Statisticians of American Religious Bodies

## ABOUT THE YEARBOOK

The Yearbook of American & Canadian Churches has served as the definitive handbook of North American denominations since 1916. Over our 100 year history, The Yearbook has remained an authoritative source for the most accurate and complete compilation of statistical data for North American religious bodies. Now an interactive online application, The Yearbook continues to catalog census information for \*\*\* denominational religious bodies. As of 2020, the Yearbook represents \*\*\*,\*\*\* faithful members, \*\*\*,\*\*\* clergy, \*\*\*,\*\*\* congregations, \*\*,\*\*\* educational bodies, and more than \$\*\*\*,\*\*\*,\*\*\*,\*\*\*.\*\* in total financial commitment.

Each listing contains a brief paragraph about the religious body, contact information for the group, and informative graphs detailing current and historical statistical data. Previously stewarded by the National Council of Churches, The Yearbook is overseen by the Association of Statisticians of American Religious Bodies (ASARB). in partnership with The National Council of Churches and Lake Institute on Faith and Giving. We invite you to join our effort by adding data for your religious group, becoming an ASARB member or making a contribution to our cause.

Visit us online at [www.asarb.org](http://www.asarb.org).

## OUR PARTNERS



## THE LATVIAN EVANGELICAL LUTHERAN CHURCH IN AMERICA



### Headquarters

1853 N. 75th Street  
Milwaukee, WI 53213  
United States  
[\(414\)258-8070](tel:(414)258-8070)  
[liepinsbaiba@yahoo.com](mailto:liepinsbaiba@yahoo.com)  
<https://www.lelba.org>  
[Christian Protestant TO BE  
ALLOCATED](#)

### Attesting Officer

JURIS PULINS  
Director of Information  
[\(815\)923-5919](tel:(815)923-5919)  
[pulins@earthlink.net](mailto:pulins@earthlink.net)

### Media Contact

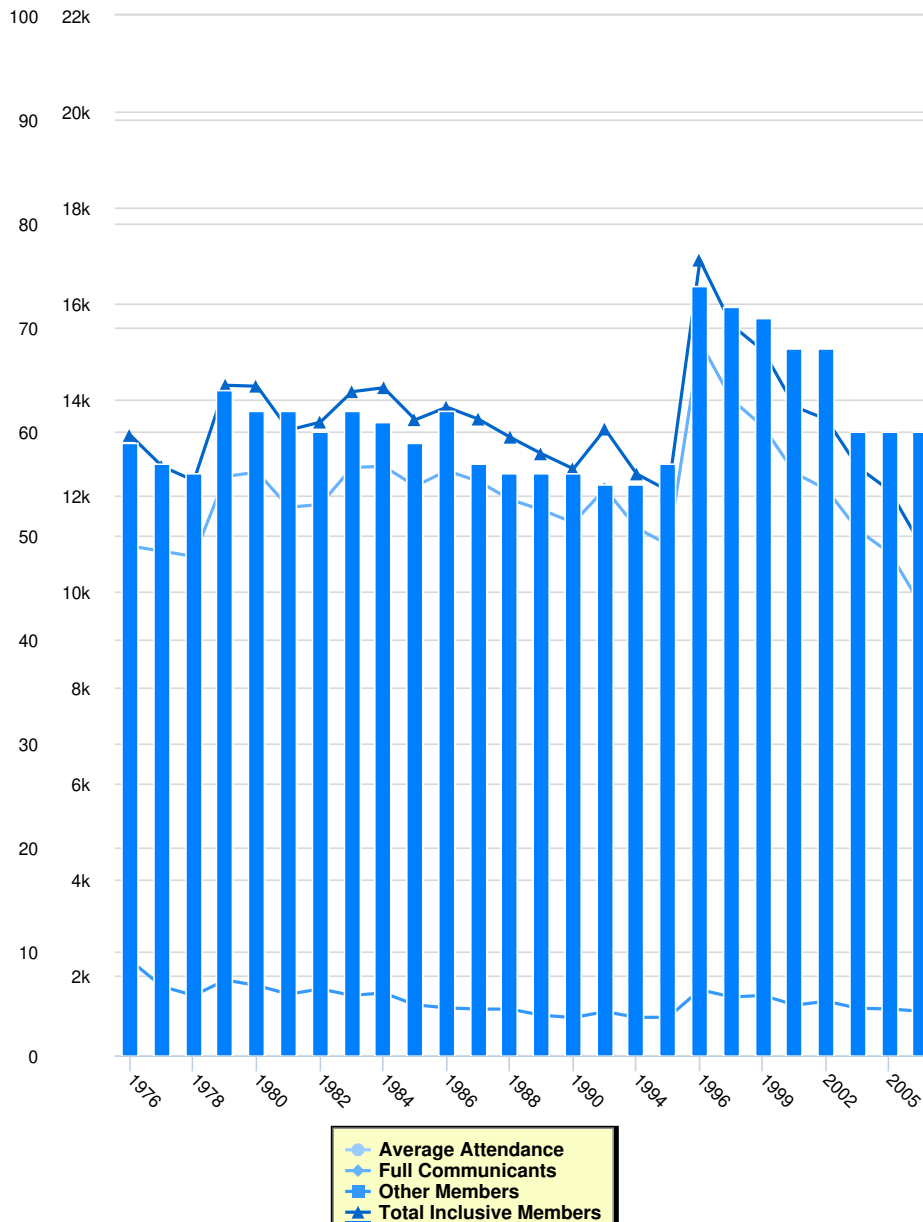
JURIS PULINS  
Director of Information  
[\(815\)923-5919](tel:(815)923-5919)  
[pulins@earthlink.net](mailto:pulins@earthlink.net)

This body was organized into a denomination on Aug. 22, 1975 after having existed as the Federation of Latvian Evangelical Lutheran Churches in America since 1955. This church is a regional constituent part of the Lutheran Church of Latvia Abroad, a member of the Lutheran World Federation and the World Council of Churches.

The Latvian Evangelical Lutheran Church in America works to foster religious life, traditions and customs in its congregations in harmony with the Holy Scriptures, the Apostles', Nicean and Athanasian Creeds, the unaltered Augsburg Confession, Martin Luther's Small and Large Catechisms and other documents of the Book of Concord.

The LELCA is ordered by its Synod (General Assembly), executive board, auditing committee and district conferences.

## Membership



### Instructions for the Chart and Legend

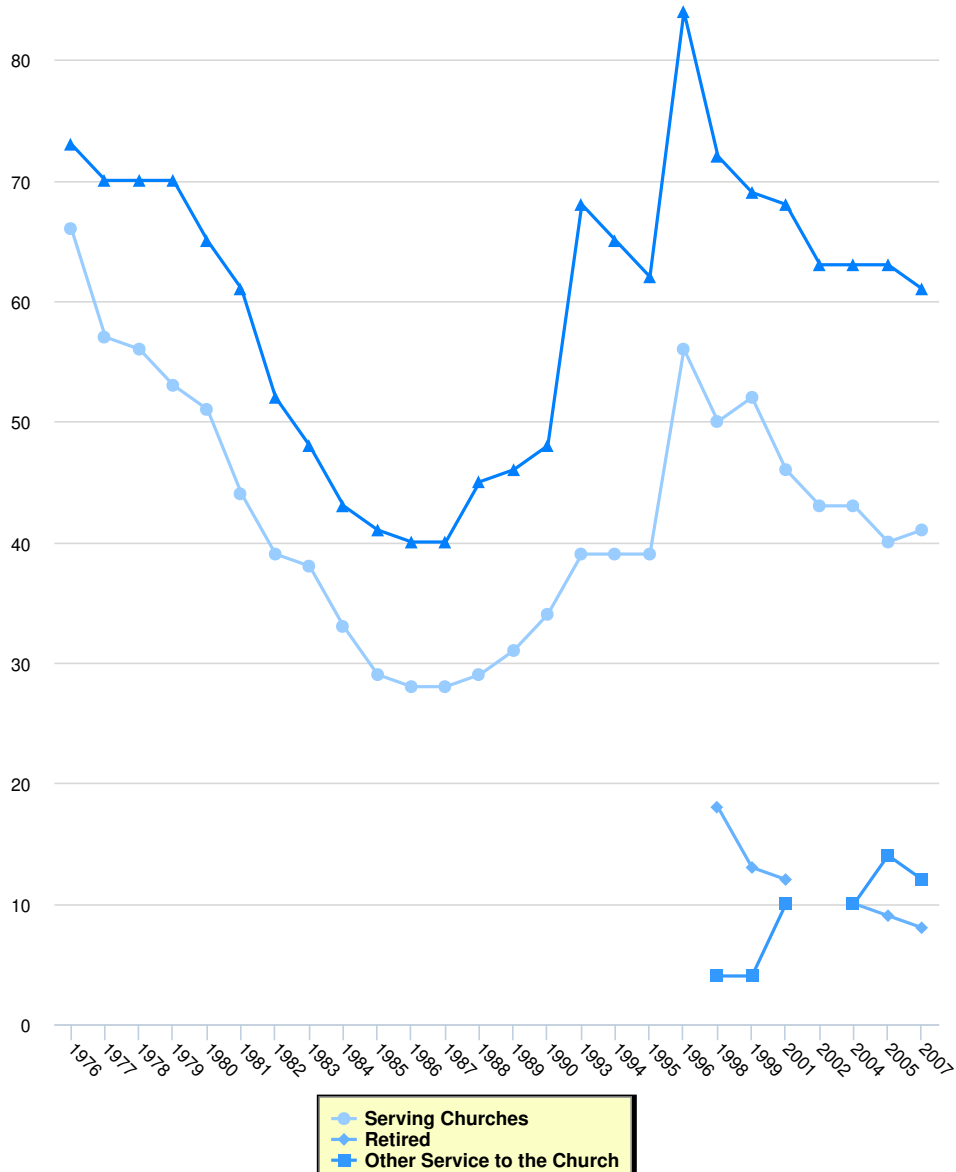
Simply click on the data set in the legend to make the values appear or disappear from the chart.

#### Membership

	Full Communicants	Average Attendance	Other Members	Total Inclusive Members	Total Churches	Membership Calculation Method
2007	9,700	2,800	1,250	10,950	60	
2005	10,800	0	1,300	12,100	60	
2004	11,273	0	1,314	12,586	60	
2002	12,124	0	1,460	13,584	68	
2001	12,465	0	1,380	13,846	68	
1999	13,431	0	1,581	15,012	71	
1998	14,000	0	1,550	15,550	72	
1996	15,200	0	1,700	16,900	74	
1995	10,970	0	1,127	12,097	57	
1994	11,322	0	1,124	12,446	55	

	<b>Full Communicants</b>	<b>Average Attendance</b>	<b>Other Members</b>	<b>Total Inclusive Members</b>	<b>Total Churches</b>	<b>Membership Calculation Method</b>
1993	12,137	0	1,243	13,380	55	
1990	11,432	0	1,121	12,553	56	
1989	11,697	0	1,168	12,865	56	
1988	11,914	0	1,297	13,211	56	
1987	12,291	0	1,297	13,588	57	
1986	12,515	0	1,323	13,838	62	
1985	12,191	0	1,385	13,576	59	
1984	12,609	0	1,634	14,243	61	
1983	12,578	0	1,582	14,160	62	
1982	11,810	0	1,716	13,526	60	
1981	11,753	0	1,608	13,361	62	
1980	12,486	0	1,788	14,274	62	
1979	12,392	0	1,902	14,294	64	
1978	10,727	0	1,581	12,308	56	
1977	10,836	0	1,767	12,603	57	
1976	10,944	0	2,303	13,247	59	

## Clergy

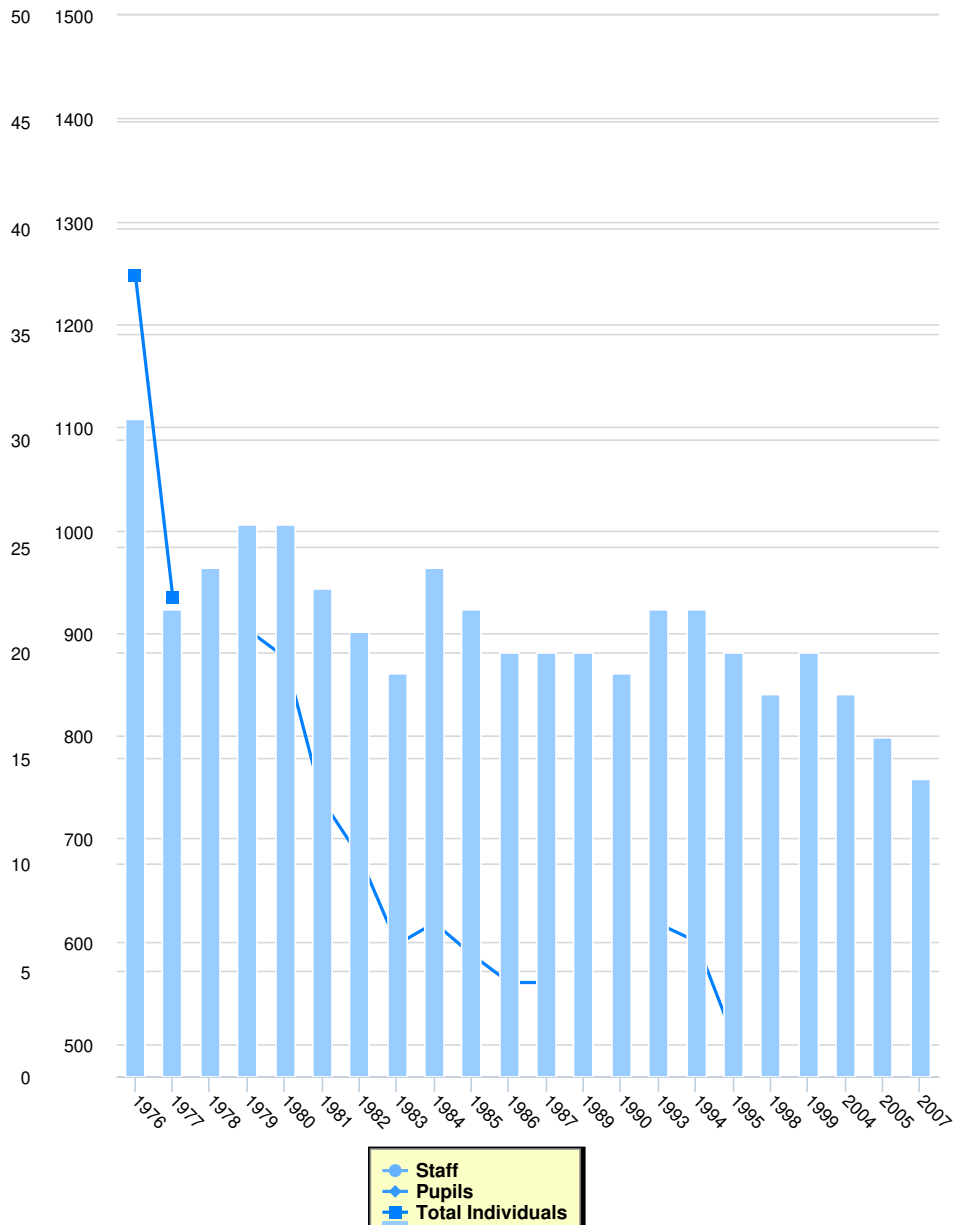


## Clergy

	Serving Churches	Retired	Other Service to the Church	Total Clergy
2007	41	8	12	61
2005	40	9	14	63
2004	43	10	10	63
2002	43	0	0	63
2001	46	12	10	68
1999	52	13	4	69
1998	50	18	4	72
1996	56	0	0	84
1995	39	0	0	62
1994	39	0	0	65
1993	39	0	0	68
1990	34	0	0	48
1989	31	0	0	46
1988	29	0	0	45

	<b>Serving Churches</b>	<b>Retired</b>	<b>Other Service to the Church</b>	<b>Total Clergy</b>
1987	28	0	0	40
1986	28	0	0	40
1985	29	0	0	41
1984	33	0	0	43
1983	38	0	0	48
1982	39	0	0	52
1981	44	0	0	61
1980	51	0	0	65
1979	53	0	0	70
1978	56	0	0	70
1977	57	0	0	70
1976	66	0	0	73

## Education

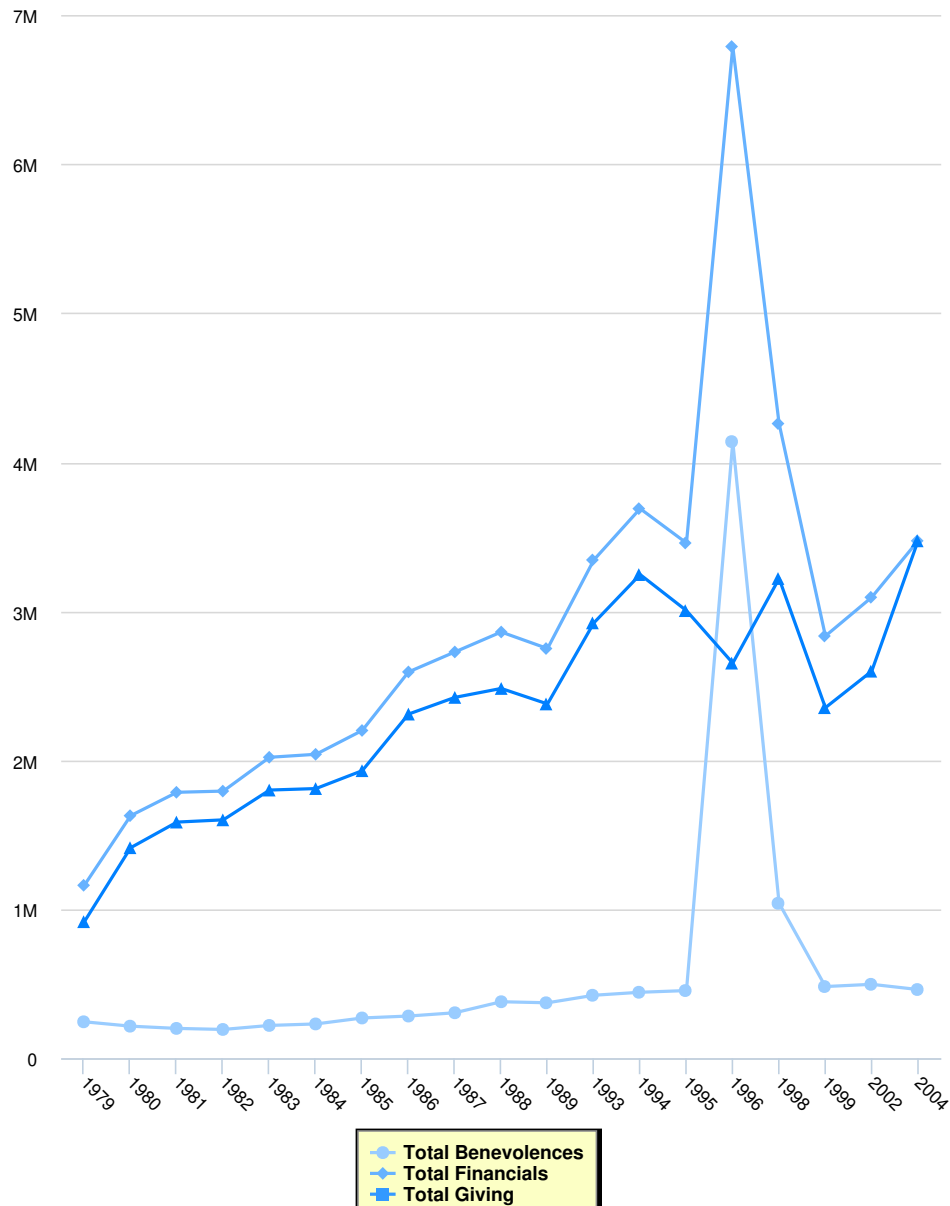


	Education			
	Total Schools	Staff	Pupils	Total Individuals
2007	14	0	0	0
2005	16	0	0	0
2004	18	0	0	0
1999	20	0	0	0
1998	18	0	0	0
1995	20	0	0	506
1994	22	0	0	600
1993	22	0	0	617
1990	19	0	0	0
1989	20	0	0	0
1987	20	0	0	560
1986	20	0	0	560
1985	22	0	0	587



	<b>Total Schools</b>	<b>Staff</b>	<b>Pupils</b>	<b>Total Individuals</b>
1984	24	0	0	618
1983	19	0	0	597
1982	21	0	0	682
1981	23	0	0	737
1980	26	0	0	876
1979	26	0	0	903
1978	24	0	0	0
1977	22	0	0	934
1976	31	0	0	1,247

## Finance



## Finance

	Total Benevolences	Total Financials	Total Giving	Local Expenses	Method
2004	\$461,000	\$3,473,000		\$3,473,000	
2002	\$496,000	\$3,094,000		\$2,598,000	
1999	\$481,000	\$2,834,000		\$2,353,000	
1998	\$1,040,000	\$4,260,000		\$3,220,000	
1996	\$4,139,000	\$6,791,000		\$2,652,000	
1995	\$453,947	\$3,458,374		\$3,004,427	
1994	\$442,618	\$3,689,092		\$3,246,474	
1993	\$422,496	\$3,344,631		\$2,922,135	
1989	\$372,000	\$2,750,000		\$2,378,000	
1988	\$379,000	\$2,861,000		\$2,482,000	
1987	\$305,000	\$2,727,000		\$2,422,000	
1986	\$283,000	\$2,593,000		\$2,310,000	
1985	\$270,000	\$2,200,000		\$1,930,000	

	<b>Total Benevolences</b>	<b>Total Financials</b>	<b>Total Giving</b>	<b>Local Expenses</b>	<b>Method</b>
1984	\$230,000	\$2,040,000		\$1,810,000	
1983	\$220,000	\$2,020,000		\$1,800,000	
1982	\$193,000	\$1,793,000		\$1,600,000	
1981	\$200,000	\$1,785,000		\$1,585,000	
1980	\$215,000	\$1,628,000		\$1,413,000	
1979	\$244,381	\$1,160,725		\$916,344	