



THE YEARBOOK

of American & Canadian Churches

ASSOCIATION OF STATISTICIANS OF AMERICAN RELIGIOUS BODIES

THE YEARBOOK OF AMERICAN & CANADIAN CHURCHES

Copyright © 2020 Association of Statisticians of American Religious Bodies All rights reserved.

No part of this book may be reproduced in any manner whatsoever without written permission of the publisher except in brief quotations embodied in critical articles or reviews. For more information, contact the Association of of Statisticians of American Religious Bodies

ABOUT THE YEARBOOK

The Yearbook of American & Canadian Churches has served as the definitive handbook of North American denominations since 1916. Over our 100 year history, The Yearbook has remained an authoritative source for the most accurate and complete compilation of statistical data for North American religious bodies. Now an interactive online application, The Yearbook continues to catalog census information for *** denominational religious bodies. As of 2020, the Yearbook represents ***,*** faithful members, ***,*** clergy, ***,*** congregations, **,*** educational bodies, and more than \$***,***,***,***.** in total financial commitment.

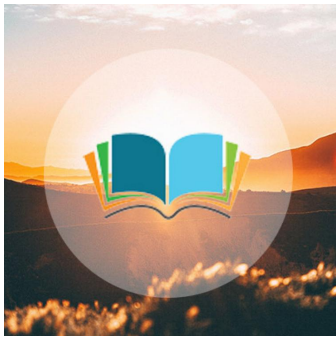
Each listing contains a brief paragraph about the religious body, contact information for the group, and informative graphs detailing current and historical statistical data. Previously stewarded by the National Council of Churches, The Yearbook is overseen by the Association of Statisticians of American Religious Bodies (ASARB). in partnership with The National Council of Churches and Lake Institute on Faith and Giving. We invite you to join our effort by adding data for your religious group, becoming an ASARB member or making a contribution to our cause.

Visit us online at www.asarb.org.

OUR PARTNERS



BEACHY AMISH MENNONITE CHURCHES



Headquarters

7809 S Herren Rd
Partridge, KS 67566
United States
[\(620\)567-2286](tel:(620)567-2286)
ivanbeachy@emypeople.net
[Christian Protestant TO BE
ALLOCATED](http://ChristianProtestantTOBEALLOCATED.com)

Attesting Officer

LINDA CARY
Information Services
Assistant
[\(870\)772-4550](tel:(870)772-4550)
lcary@discipleguide.org

Media Contact

PAUL L. MILLER

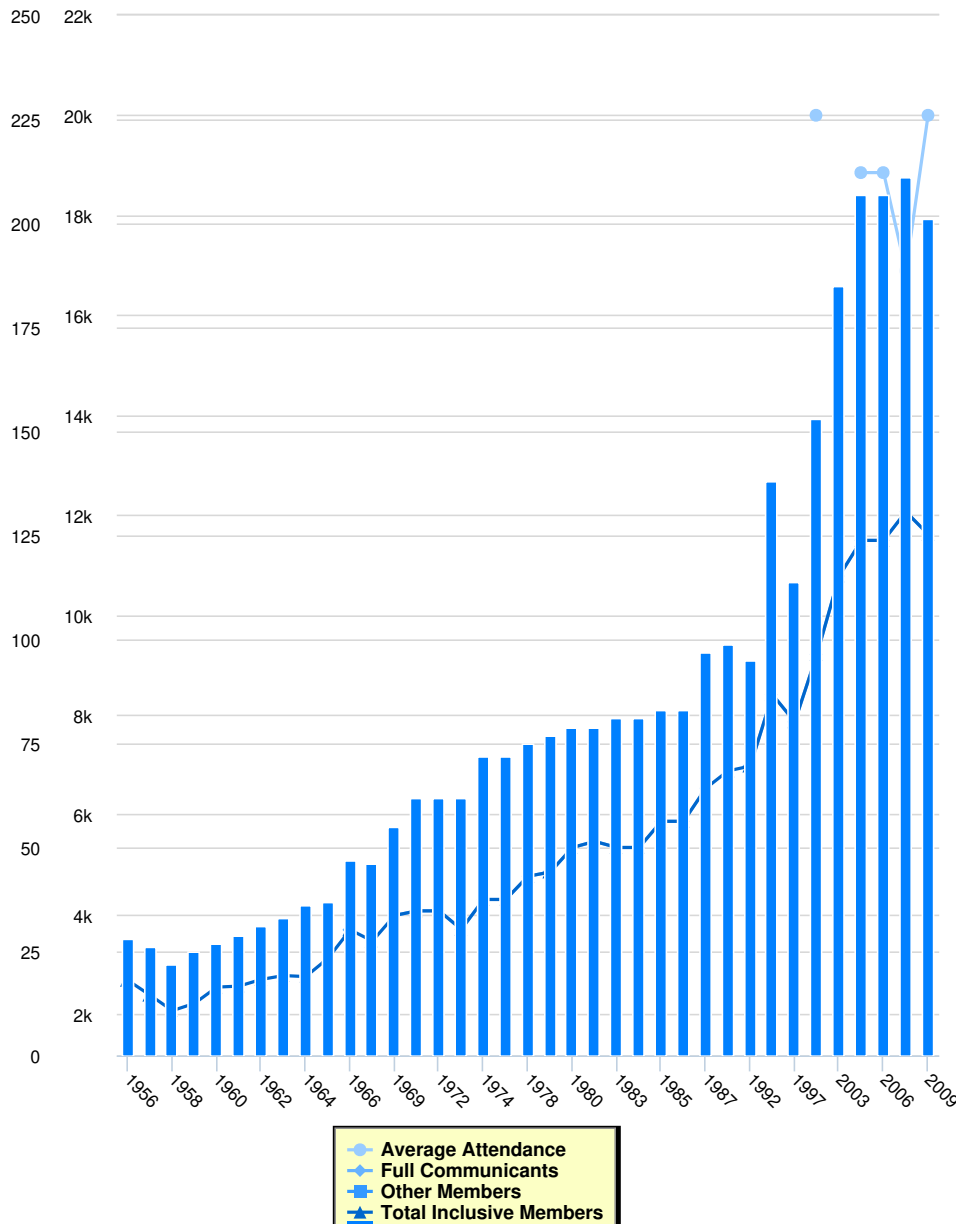
The Beachy Amish Mennonite Church was established in 1927 in Somerset County, Pa. following a division in the Amish Mennonite Church in that area. As congregations in other locations joined the movement, they were identified by the same name. There are currently 97 churches in the United States, 9 in Canada and 34 in other countries. Membership in the United States is 7,059, according to the 1996 Mennonite Yearbook.

Beachy Churches believe in one God eternally existent in three persons (Father, Son and Holy Spirit); that Jesus Christ is the one and only way to salvation; that the Bible is God's infallible Word to us, by which all will be judged; that heaven is the eternal abode of the redeemed in Christ; and that the wicked and unbelieving will endure hell eternally.

Evangelical mission boards sponsor missions in Central and South America, Ireland, and in Kenya, Africa.

The Mission Interests Committee, founded in 1953 for evangelism and other Christian services, sponsors homes for handicapped youth and elderly people, mission outreaches among the North American Indians in Canada and a mission outreach in Europe.

Membership



Instructions for the Chart and Legend

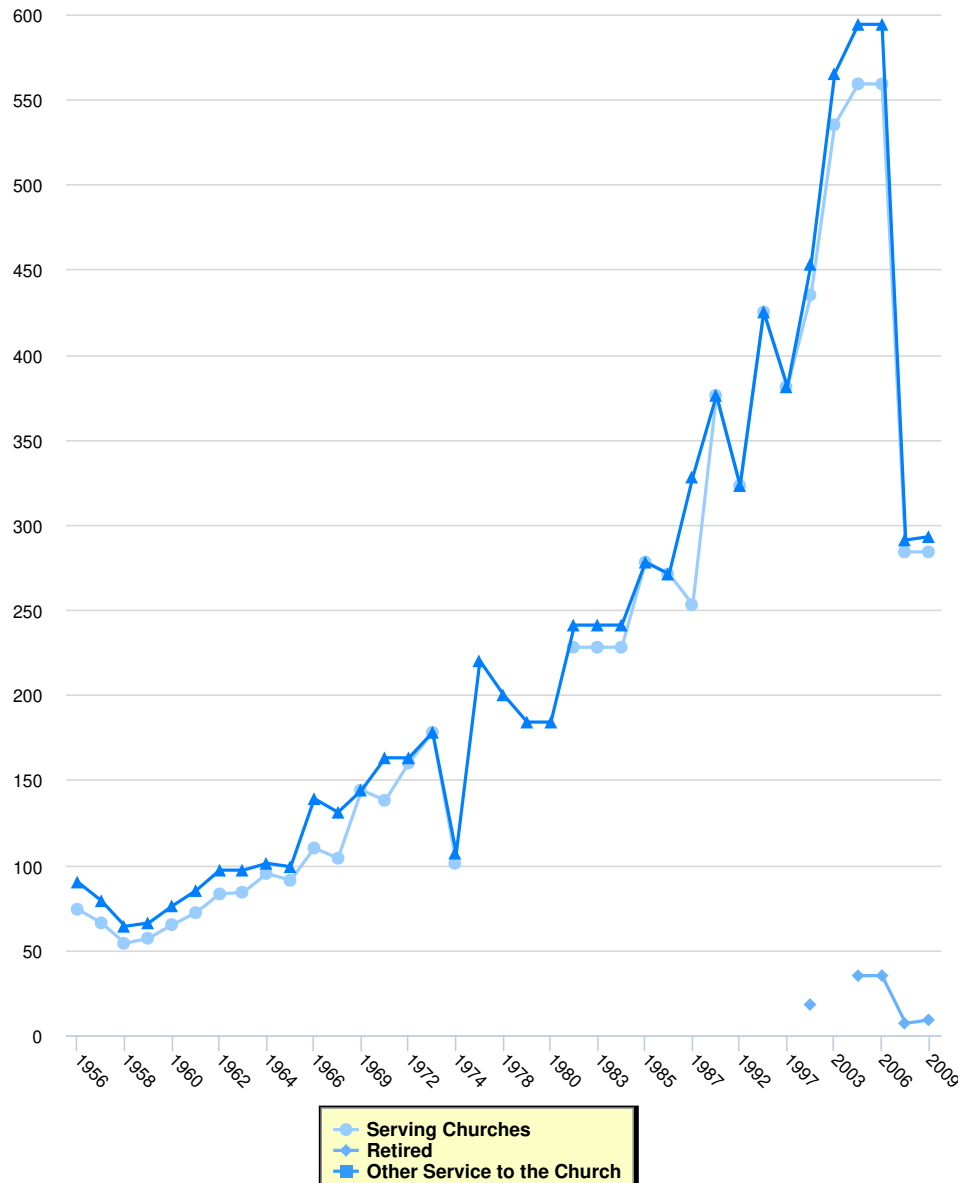
Simply click on the data set in the legend to make the values appear or disappear from the chart.

Membership

	Full Communicants	Average Attendance	Other Members	Total Inclusive Members	Total Churches	Membership Calculation Method
2009	11,611	20,000	0	11,611	201	
2008	12,062	16,886	0	12,062	211	
2006	11,487	18,852	0	11,487	207	
2005	11,487	18,852	0	11,487	207	
2003	10,773	0	0	10,773	185	
2000	9,205	20,000	0	9,205	153	
1997	7,853	0	0	7,853	114	
1996	8,399	0	0	8,399	138	
1992	6,968	0	0	6,968	95	
1989	0	0	0	6,872	99	

	Full Communicants	Average Attendance	Other Members	Total Inclusive Members	Total Churches	Membership Calculation Method
1987	6,524	0	0	6,524	97	
1986	5,862	0	0	5,862	83	
1985	5,862	0	0	5,862	83	
1984	5,338	0	0	5,338	81	
1983	5,338	0	0	5,338	81	
1981	5,460	0	0	5,460	79	
1980	5,338	0	0	5,338	79	
1979	4,846	0	0	4,846	77	
1978	4,762	0	0	4,762	75	
1977	4,297	0	0	4,297	72	
1974	4,297	0	0	4,297	72	
1973	3,699	0	0	3,699	62	
1972	4,069	0	0	4,069	62	
1971	4,069	0	0	4,069	62	
1969	3,977	0	0	3,977	55	
1967	0	0	0	3,465	46	
1966	3,689	0	0	3,689	47	
1965	0	0	0	3,117	37	
1964	0	0	0	2,753	36	
1963	0	0	0	2,773	33	
1962	0	0	0	2,696	31	
1961	0	0	0	2,562	29	
1960	0	0	0	2,542	27	
1959	0	0	0	2,217	25	
1958	0	0	0	2,071	22	
1957	0	0	0	2,380	26	
1956	0	0	0	2,677	28	

Clergy

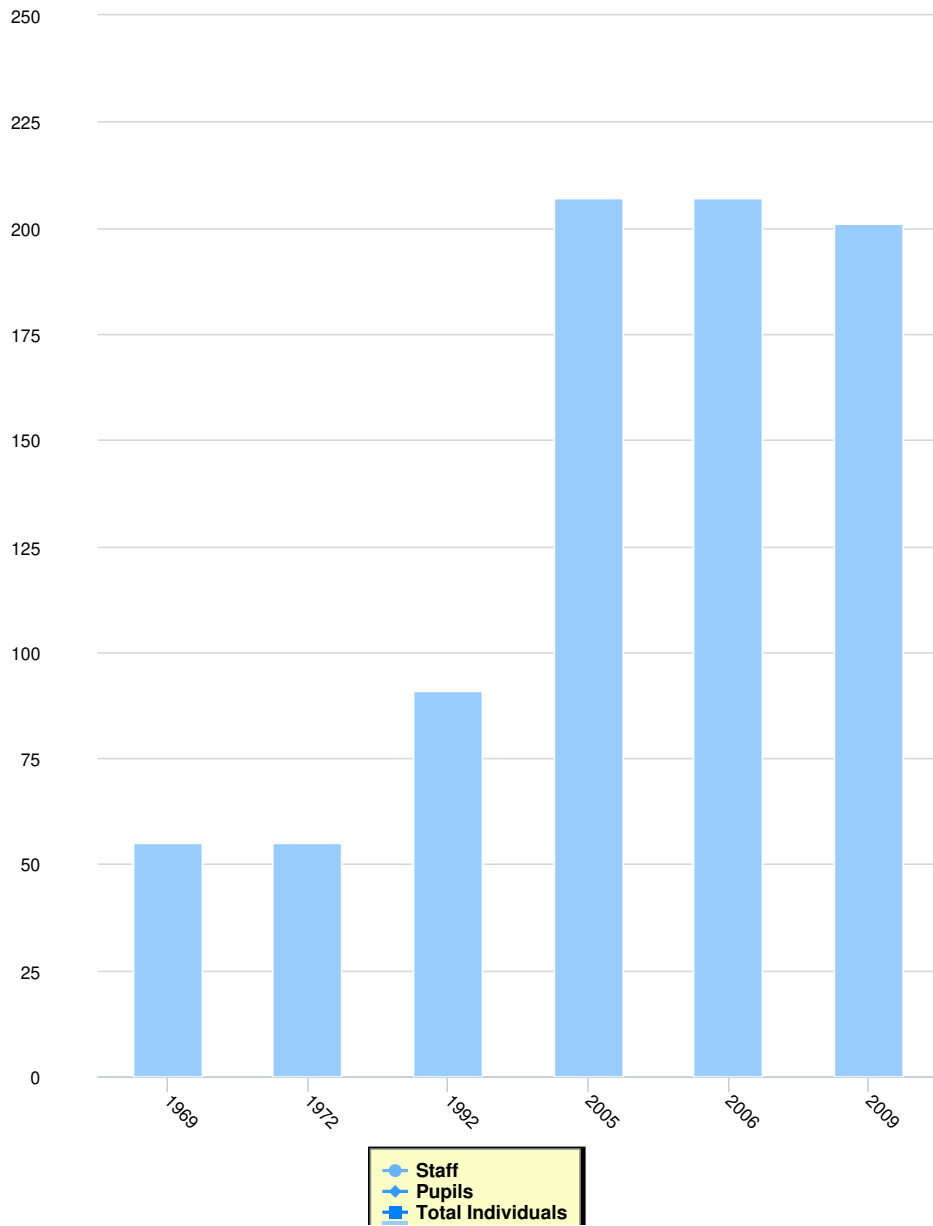


Clergy

	Serving Churches	Retired	Other Service to the Church	Total Clergy
2009	284	9	0	293
2008	284	7	0	291
2006	559	35	0	594
2005	559	35	0	594
2003	535	0	0	535
2000	435	18	0	453
1997	381	0	0	381
1996	425	0	0	425
1992	323	0	0	323
1989	376	0	0	376
1987	253	0	0	253
1986	271	0	0	271
1985	278	0	0	278
1984	228	0	0	228

	Serving Churches	Retired	Other Service to the Church	Total Clergy
1983	228	0	0	241
1981	228	0	0	241
1980	0	0	0	184
1979	0	0	0	184
1978	0	0	0	200
1977	0	0	0	220
1974	101	0	0	107
1973	178	0	0	178
1972	160	0	0	163
1971	138	0	0	163
1969	144	0	0	144
1967	104	0	0	131
1966	110	0	0	139
1965	91	0	0	99
1964	95	0	0	101
1963	84	0	0	97
1962	83	0	0	97
1961	72	0	0	85
1960	65	0	0	76
1959	57	0	0	66
1958	54	0	0	64
1957	66	0	0	79
1956	74	0	0	90

Education



	Education			
	Total Schools	Staff	Pupils	Total Individuals
2009	201	0	0	0
2006	207	0	0	0
2005	207	0	0	0
1992	91	0	0	0
1972	55	0	0	0
1969	55	0	0	0

Total Benevolences	Total Financials	Finance	Total Giving	Local Expenses	Method
---------------------------	-------------------------	---------	---------------------	-----------------------	---------------

There is no data yet