



# **THE YEARBOOK**

of American & Canadian Churches

ASSOCIATION OF STATISTICIANS OF AMERICAN RELIGIOUS BODIES

# THE YEARBOOK OF AMERICAN & CANADIAN CHURCHES

Copyright © 2020 Association of Statisticians of American Religious Bodies All rights reserved.

No part of this book may be reproduced in any manner whatsoever without written permission of the publisher except in brief quotations embodied in critical articles or reviews. For more information, contact the Association of of Statisticians of American Religious Bodies

## ABOUT THE YEARBOOK

The Yearbook of American & Canadian Churches has served as the definitive handbook of North American denominations since 1916. Over our 100 year history, The Yearbook has remained an authoritative source for the most accurate and complete compilation of statistical data for North American religious bodies. Now an interactive online application, The Yearbook continues to catalog census information for \*\*\* denominational religious bodies. As of 2020, the Yearbook represents \*\*\*,\*\*\* faithful members, \*\*\*,\*\*\* clergy, \*\*\*,\*\*\* congregations, \*\*,\*\*\* educational bodies, and more than \$\*\*\*,\*\*\*,\*\*\*,\*\*\*.\*\* in total financial commitment.

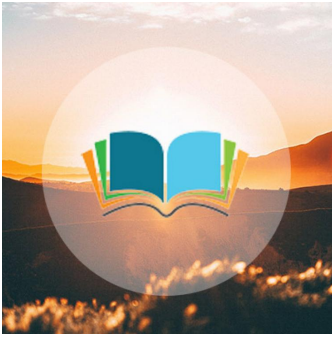
Each listing contains a brief paragraph about the religious body, contact information for the group, and informative graphs detailing current and historical statistical data. Previously stewarded by the National Council of Churches, The Yearbook is overseen by the Association of Statisticians of American Religious Bodies (ASARB). in partnership with The National Council of Churches and Lake Institute on Faith and Giving. We invite you to join our effort by adding data for your religious group, becoming an ASARB member or making a contribution to our cause.

Visit us online at [www.asarb.org](http://www.asarb.org).

## OUR PARTNERS



## THE CHURCH OF CHRIST (HOLINESS) U.S.A.



### Headquarters

329 East Monument Street  
P.O. Box 3622  
Jackson, MS 39207  
United States  
[\(601\)353-0222](tel:(601)353-0222)  
[cochusa@bellsouth.net](mailto:cochusa@bellsouth.net)  
<https://www.cochusa...>  
[Christian Protestant TO BE  
ALLOCATED](#)

### Attesting Officer

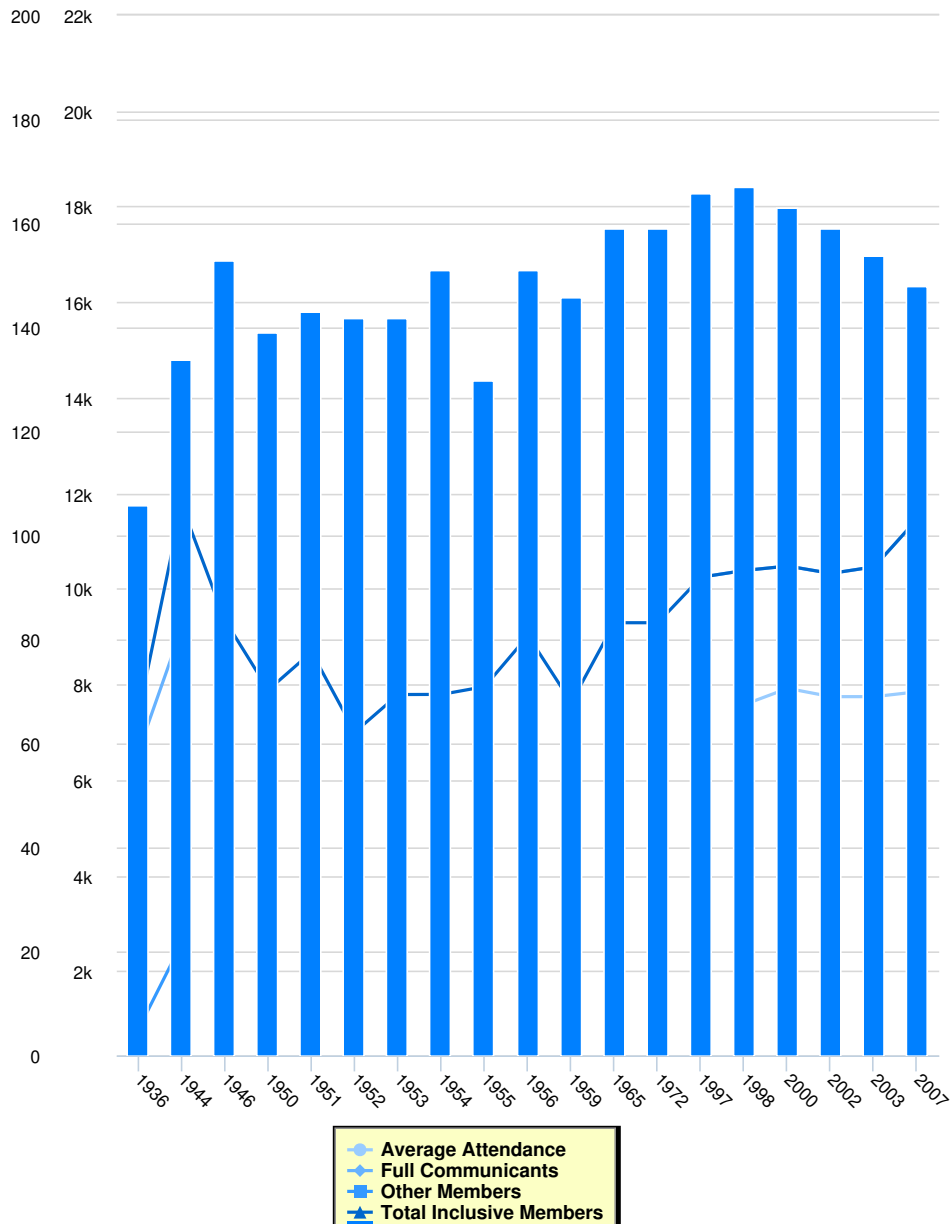
WILLIAM A. SHELDON  
Gen. Church Rep.  
[\(816\)833-3995](tel:(816)833-3995)  
[cofctl@kcnet.com](mailto:cofctl@kcnet.com)

### Media Contact

MAURICE D. BINGHAM, ED.  
D., SENIOR BISHOP  
EMERITUS

The Church of Christ (Holiness) U.S.A. has a Divine commission to propagate the gospel throughout the world, to seek the conversion of sinners, to reclaim backsliders, to encourage the sanctification of believers, to support divine healing, and to advance the truth for the return of our Lord and Savior Jesus Christ. This must be done through proper organization. The fundamental principles of Christ's Church have remained the same. The laws founded upon these principles are to remain unchanged. The Church of Christ (Holiness) U.S.A. is representative in form of government; therefore, the final authority in defining the organizational responsibilities rests with the national convention. The bishops of the church are delegated special powers to act in behalf of or speak for the church. The pastors are ordained ministers, who under the call of God and His people, have divine oversight of local churches. However, the representative form of government gives ministry and laity equal authority in all deliberate bodies. With the leadership of the Holy Spirit, Respect, Loyalty and Love will greatly increase.

## Membership



### Instructions for the Chart and Legend

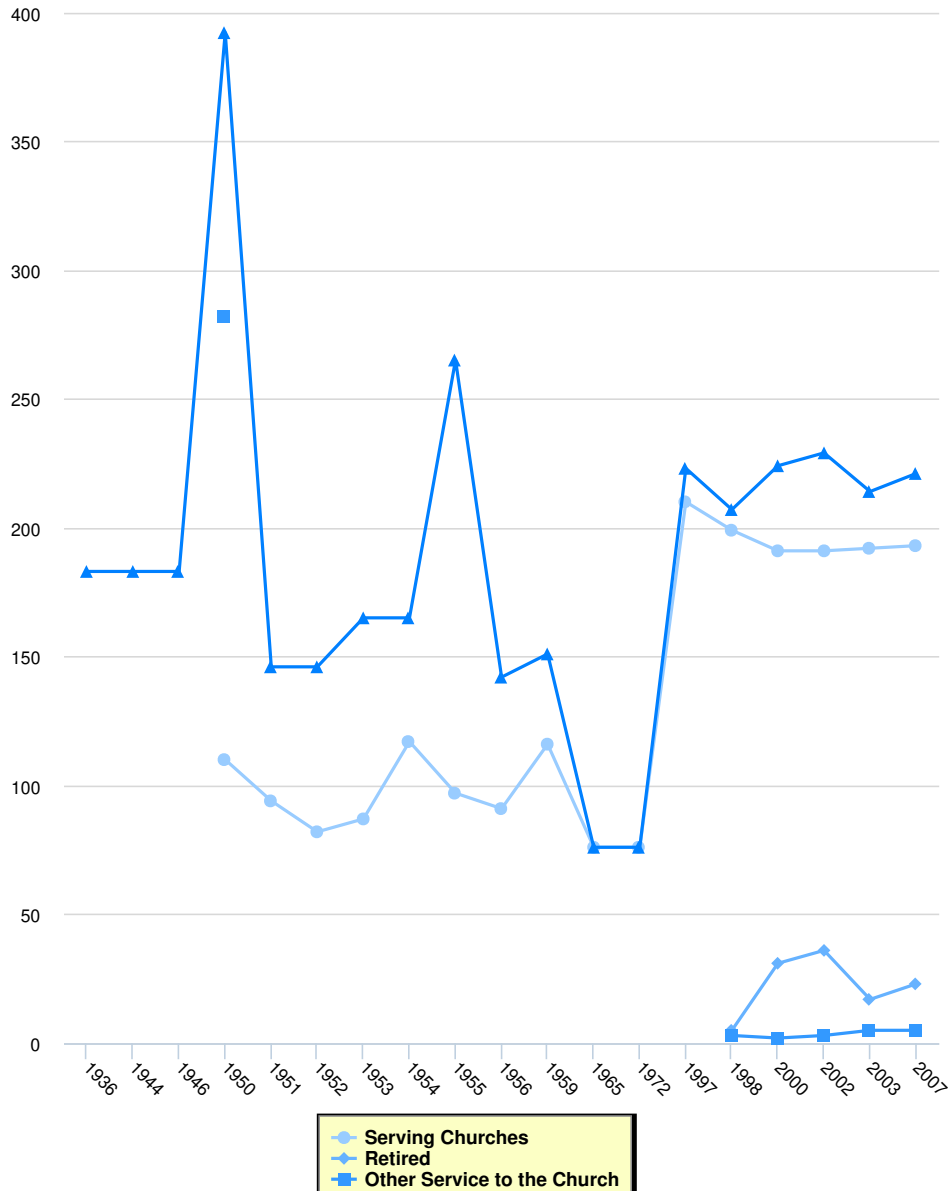
Simply click on the data set in the legend to make the values appear or disappear from the chart.

#### Membership

	Full Communicants	Average Attendance	Other Members	Total Inclusive Members	Total Churches	Membership Calculation Method
2007	11,468	7,844	0	11,468	148	
2003	10,460	7,742	0	10,460	154	
2002	10,321	7,742	0	10,321	159	
2000	10,475	7,915	0	10,475	163	
1998	10,383	7,576	0	10,383	167	
1997	10,243	0	0	10,243	166	
1972	0	0	0	9,289	159	
1965	0	0	0	9,289	159	
1959	0	0	0	7,621	146	
1956	0	0	0	9,018	151	

	<b>Full Communicants</b>	<b>Average Attendance</b>	<b>Other Members</b>	<b>Total Inclusive Members</b>	<b>Total Churches</b>	<b>Membership Calculation Method</b>
1955	0	0	0	7,952	130	
1954	0	0	0	7,789	151	
1953	0	0	0	7,786	142	
1952	0	0	0	7,000	142	
1951	0	0	0	8,676	143	
1950	4,760	0	3,122	7,882	139	
1946	0	0	0	9,340	153	
1944	9,170	0	2,581	11,751	134	
1936	6,597	0	782	7,379	106	

## Clergy

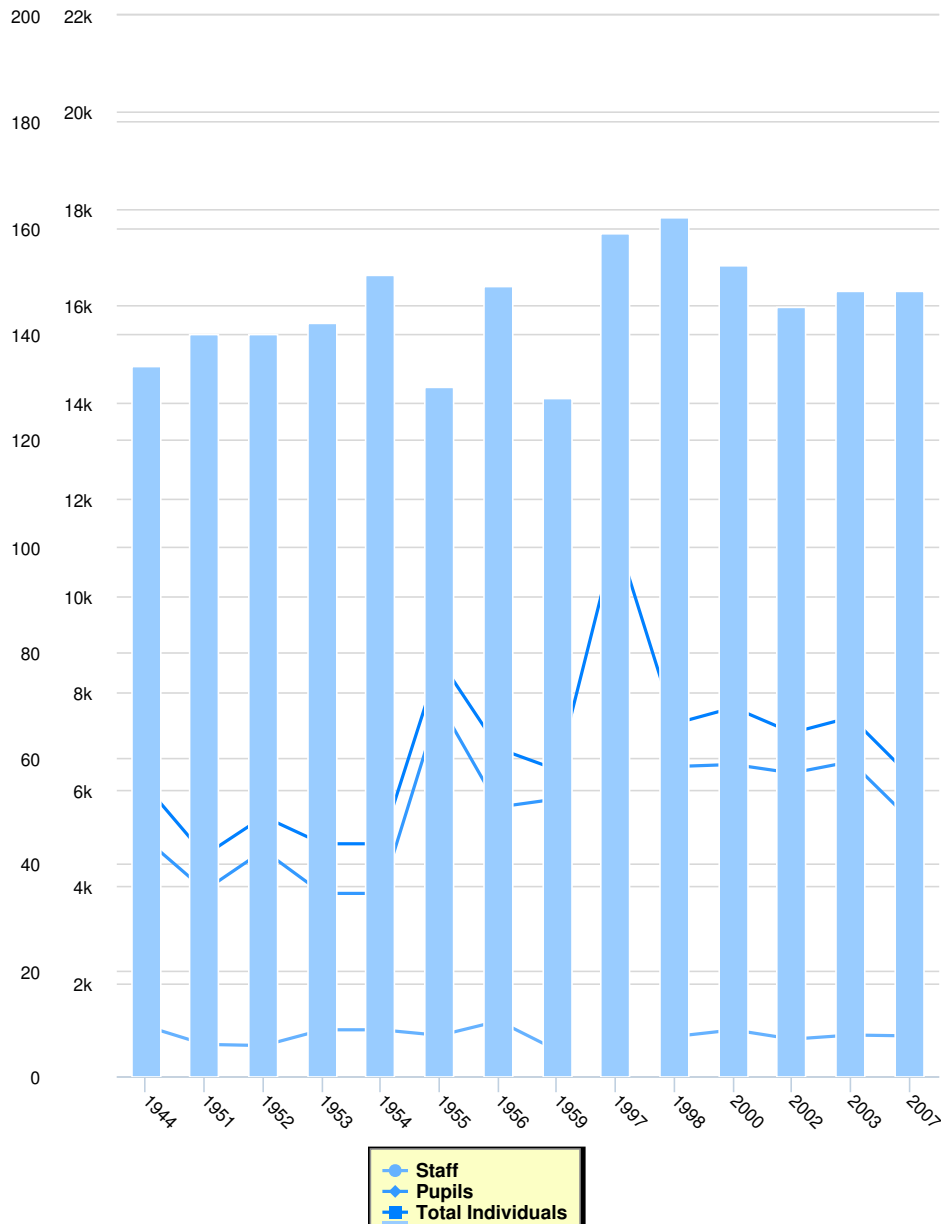


## Clergy

	Serving Churches	Retired	Other Service to the Church	Total Clergy
2007	193	23	5	221
2003	192	17	5	214
2002	191	36	3	229
2000	191	31	2	224
1998	199	5	3	207
1997	210	0	0	223
1972	76	0	0	76
1965	76	0	0	76
1959	116	0	0	151
1956	91	0	0	142
1955	97	0	0	265
1954	117	0	0	165
1953	87	0	0	165
1952	82	0	0	146

	<b>Serving Churches</b>	<b>Retired</b>	<b>Other Service to the Church</b>	<b>Total Clergy</b>
1951	94	0	0	146
1950	110	0	282	392
1946	0	0	0	183
1944	0	0	0	183
1936	0	0	0	183

## Education



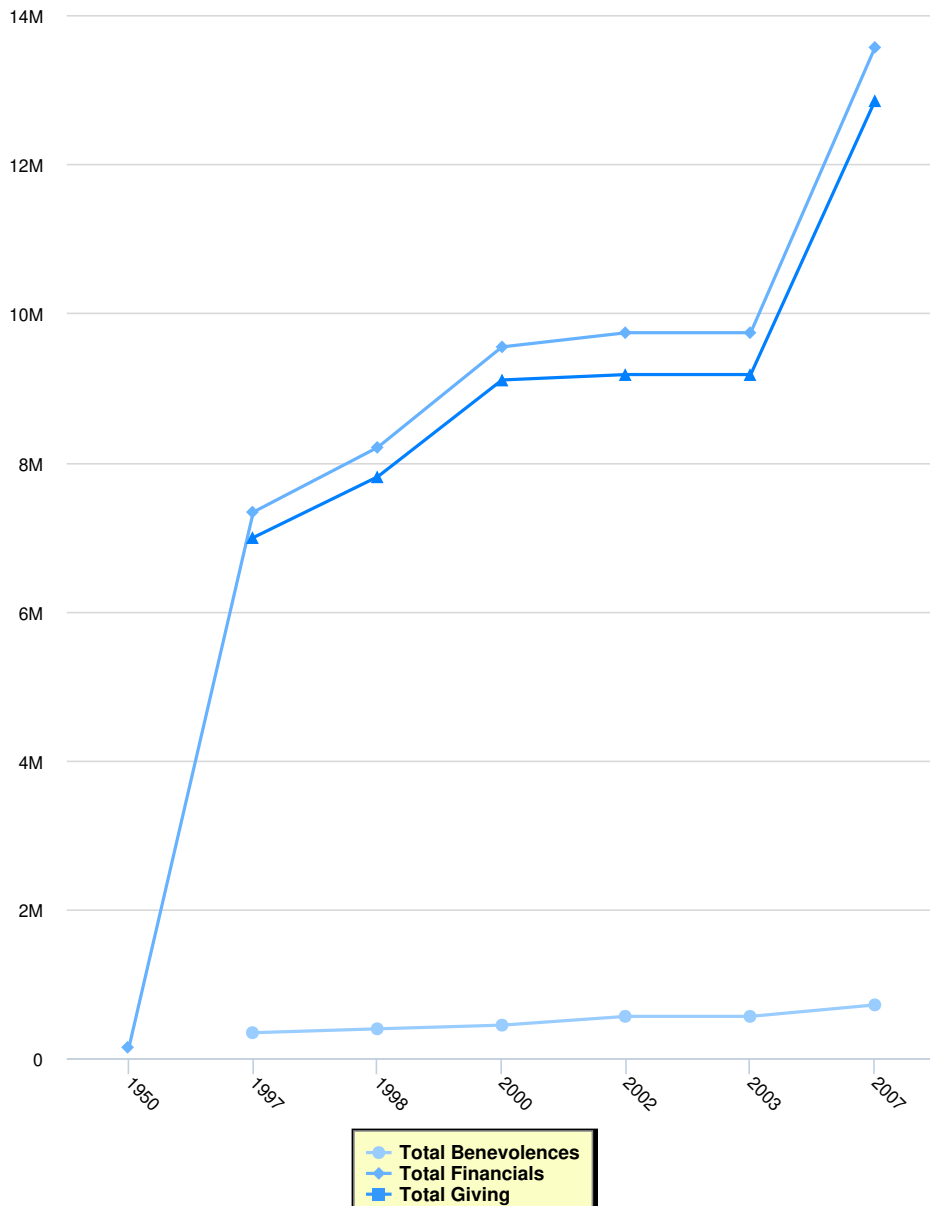
## Education

	<b>Total Schools</b>	<b>Staff</b>	<b>Pupils</b>	<b>Total Individuals</b>
2007	148	900	5,376	6,276
2003	148	918	6,571	7,489
2002	145	833	6,335	7,168
2000	153	1,024	6,512	7,689
1998	162	888	6,469	7,357
1997	159	0	0	11,230
1959	128	598	5,801	6,399
1956	149	1,208	5,632	6,840
1955	130	910	7,758	8,668
1954	151	1,026	3,846	4,872
1953	142	1,026	3,846	4,872
1952	140	700	4,736	5,436
1951	140	724	3,911	4,635



1944	<b>Total Schools</b> 134	<b>Staff</b> 1,100	<b>Pupils</b> 4,961	<b>Total Individuals</b> 6,061
------	-----------------------------	-----------------------	------------------------	-----------------------------------

## Finance



## Finance

	<b>Total Benevolences</b>	<b>Total Financials</b>	<b>Total Giving</b>	<b>Local Expenses</b>	<b>Method</b>
2007	\$715,581	\$13,571,278		\$12,855,697	
2003	\$561,764	\$9,740,580		\$9,178,816	
2002	\$561,764	\$9,740,580		\$9,178,816	
2000	\$443,937	\$9,550,000		\$9,106,063	
1998	\$394,378	\$8,200,657		\$7,806,279	
1997	\$342,400	\$7,332,546		\$6,990,146	
1950	\$0	\$146,400		\$0	